

A



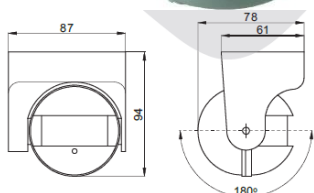
RoHS

BS14

Sensore IR switch - ogni variazione all'interno del range (1-6 cm) di rilevamento determina l'accensione o lo spegnimento della lampada

IR sensor switch - any variation within the detection range (1-6 cm) causes a switch change to ON; switch changes to OFF when a new motion is detected

CODE	V in ac	IP	Max Load A	Max Power W	H mm	L x P mm
BS14	220	20	10	250	20	82 x 33



A



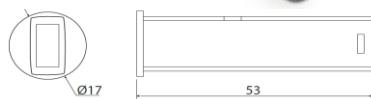
RoHS

BSE1

Sensore IR switch - ogni variazione all'interno del range (10 m) di rilevamento determina l'accensione o lo spegnimento della lampada

IR sensor switch - any variation within the detection range (10m) causes a switch change to ON; switch changes to OFF when a new motion is detected

CODE	V in ac	IP	RANGE m	Max Load W	H mm	L x D mm
BSE1	220	44	10	250	94	78 x 87



A



RoHS

BS15

Sensore IR switch - ad ogni variazione all'interno del range (5-10 cm) di rilevamento determina l'accensione o lo spegnimento della lampada

IR sensor switch - any reflection within the detection range (5-10 cm) causes a switch change to ON; switch changes to OFF when a new motion is detected

CODE	V in dc	V out dc	Max Load A	Max Power W	H mm	L x D mm
BS15	12	0-12	2	48	17	53 x 17